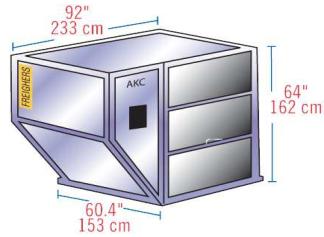


# AIR FREIGHT CONTAINERS SPECIFICATIONS

The following guide to air freight containers, also called Unit Load Device (ULD), has been developed from materials supplied by IATA (International Air Transport Association) and ATA (Air Transport Association of America). This guide lists and illustrates the average external dimensions and weight limitations of the primary containers in use today. Exact dimensions and weight limitations will vary by manufacturer and availability will vary by air carrier and trade lane.

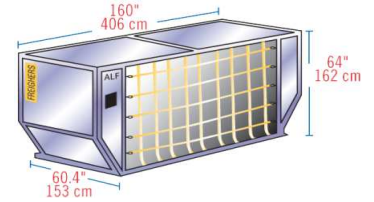
## LD-1

IATA ULD Code: AKC Contoured Container  
 Also known as: AVC, AVD, AVK, AVJ  
 Forkable: AVY  
 Classification: LD-1  
 Suitable for: B747, B767, B777, MD-11  
 Internal volume: 4.8 m<sup>3</sup> (169.5 Ft<sup>3</sup>)  
 Maximum gross weight: 1,588 Kg (3,501 Lb)



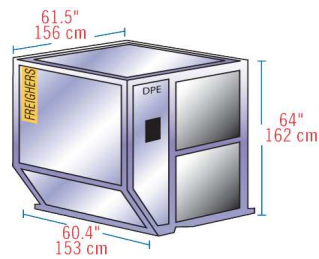
## LD-6

IATA ULD Code: ALF Contoured Container  
 Also known as: AWD, AWF  
 Forkable: AWC  
 Classification: LD-6  
 Suitable for: A300, A310, A330, A340, B747, B777, DC-10, MD-11, L1011  
 Internal volume: 8.9 m<sup>3</sup> (314.3 Ft<sup>3</sup>)  
 Maximum gross weight: 3,175 Kg (7,000 Lb)



## LD-2

IATA ULD Code: DPE Contoured Container  
 Also known as: APA, DPA  
 Forkable: DPN  
 Classification: LD-2  
 Suitable for: B767  
 Internal volume: 3.4 m<sup>3</sup> (120 Ft<sup>3</sup>)  
 Maximum gross weight: 1,225 Kg (2701 Lb)



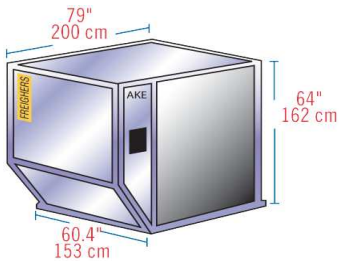
## LD-7

IATA ULD Code: XAW P1P Pallet with fixed angle wings and net  
 Classification: LD-7  
 Suitable for: Wide body: All aircraft  
 Maximum volume with overhang: 14 m<sup>3</sup> (494.3 Ft<sup>3</sup>)  
 Maximum gross weight: 5,000 Kg (11,023 LB)



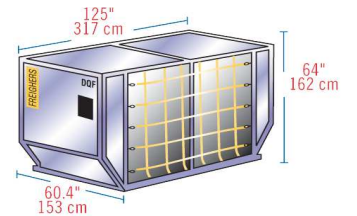
## LD-3

IATA ULD Code: AKE Contoured Container  
 Also known as: AKE, AVA, AVB, AVC, AVK, DVA, DVE, DVP, XKS, XKG  
 Forkable: AKN, AVN, DKN, DVN, XKN  
 Classification: LD-3  
 Suitable for: A300, A310, A330, A340, B747, B767, B777, DC-10, MD-11, L1011  
 Internal volume: 4.3 m<sup>3</sup> (151.8 Ft<sup>3</sup>)  
 Maximum gross weight: 1,588 Kg (3500 Lb)



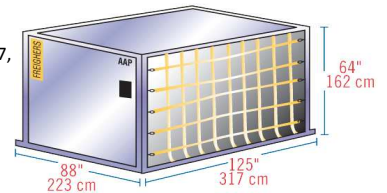
## LD-8

IATA ULD Code: DQP  
 Also known as: ALE, ALN, DEL, DLF, DQP, MQP  
 Classification: LD-8  
 Suitable for: B767  
 Internal volume: 6.85 m<sup>3</sup> (241.9 Ft<sup>3</sup>)  
 Maximum gross weight: 2,450 Kg (5,401 Lb)



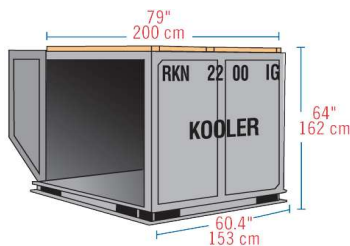
## LD-9

IATA ULD Code: AAP Enclosed Pallet on P1P base  
 Also known as: AA2, XAG, XAV  
 Classification: LD-9  
 Suitable for: A300, A310, A330, A340, B747, B767, DC-10, MD-11, L1011  
 Internal volume: 9.1 m<sup>3</sup> (321.3 Ft<sup>3</sup>)  
 Maximum gross weight: 4,624 Kg (10,194 Lb) lower deck  
 6,000 Kg (13,227 Lb) main deck



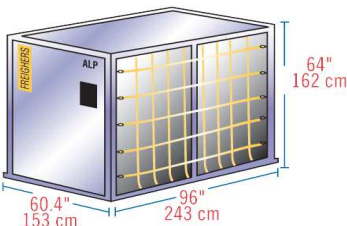
## INSULATED LD-3

IATA ULD Code: RKN  
 Classification: LD-3  
 Suitable for: A300, A310, A330, A340, B747, B767, B777, DC-10, MD-11, L1011  
 Internal volume: 3 m<sup>3</sup> (105.9 Ft<sup>3</sup>)  
 Maximum gross weight: 1,588 Kg (3501 Lb)  
 Temperature control range: -20C to +20C



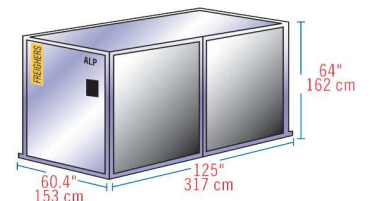
## LD-4

IATA ULD Code: ALP Rectangular Container  
 Also known as: ALD, AWD, AWZ, DLP  
 Forkable: ALB, ALC, AWB, AWC  
 Classification: LD-4  
 Suitable for: B767, B777  
 Internal volume: 5.7 m<sup>3</sup> (201.2 Ft<sup>3</sup>)  
 Maximum gross weight: 2,449 Kg (5399 Lb)



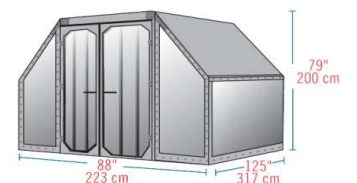
## LD-11

IATA ULD Code: ALP Rectangular Container  
 Also known as: ALD, AW2, AWB, AWD, AWZ, DLP, DWB, MWB  
 Refrigerated version: RWB, RWD, RWZ  
 Classification: LD-11  
 Suitable for: A300, A310, A330, A340, B747, B777, DC-10, MD-11, L1011  
 Internal volume: 7.2 m<sup>3</sup> (254.2 Ft<sup>3</sup>)  
 Maximum gross weight: 3,176 Kg (7,002 Lb)



## A-2

IATA ULD Code: DAA  
 Classification: A-2  
 Suitable for: B747, B747F, DC8, DC10, A300/F  
 Internal volume: 12.6 m<sup>3</sup> (444.9 Ft<sup>3</sup>)  
 Maximum gross weight: 6,033 Kg (13,300 Lb)

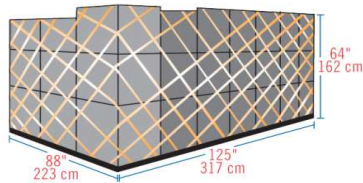


# AIR FREIGHT CONTAINERS SPECIFICATIONS

The following guide to air freight containers, also called Unit Load Devices (ULD), has been developed from materials supplied by IATA (International Air Transport Association) and ATA (Air Transport Association of America). This guide lists and illustrates the average external dimensions and weight limitations of the primary containers in use today. Exact dimensions and weight limitations will vary by manufacturer and availability will vary by air carrier and trade lane.

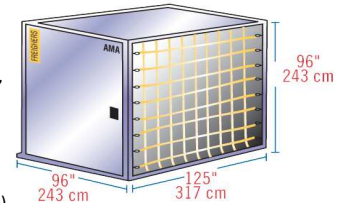
## 88" PALLET

IATA ULD Code: P1P  
 Classification: 88" Pallet with net  
 Suitable for: B747, B767, B777, DC-10  
 Maximum volume: 11.9 m<sup>3</sup> (420.2 Ft<sup>3</sup>)  
 Maximum gross weight:  
 747/DC-10: 6,033 Kg (13,300 Lb)  
 767: 5,103 Kg (11,250 Lb)  
 777/DC: 4,626 Kg (10,199 Lb)



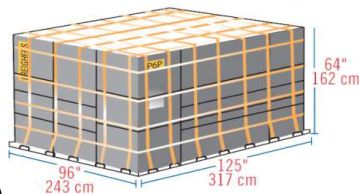
## AQ6

IATA ULD Code: AMA Rectangular Container on P6P Base  
 Also known as: AMF, AMG, AMK, AMP, AQA, AQD, AQ6  
 Classification: M-1  
 Suitable for: B747F, B747Combi  
 Maximum volume: 17.5 m<sup>3</sup> (617.9 Ft<sup>3</sup>)  
 Maximum gross weight: 6,804 Kg (15,000 Lb)



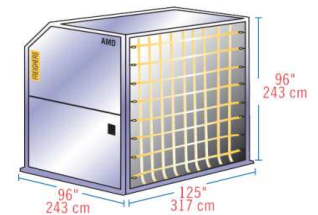
## 96" PALLET

IATA ULD Code: P6P 10Ft flat pallet with net  
 Also known as: P6A, P6C, P6Q, PMA, PMC, PMP, PQP  
 Classification: LD-9  
 Suitable for: A300, A310, A330, A340, B747, B767, B777, DC-10, MD-11, L1011  
 Maximum volume: 21.2 m<sup>3</sup> (748.6 Ft<sup>3</sup>)  
 Maximum gross weight: 6,804 Kg (15,000 Lb)



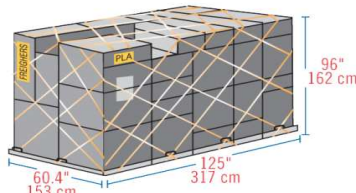
## AQ7

IATA ULD Code: AMD Contoured Container on P6P Base  
 Also known as: AQA, AQ7  
 Classification: M1H  
 Suitable for: B747F, B747Combi  
 Internal volume: 19.9 m<sup>3</sup> (702.7 Ft<sup>3</sup>)  
 Maximum gross weight: 6,800 Kg (14,991 Lb)



## HALF PALLET

IATA ULD Code: PLA half pallet with net  
 Also known as: PLB, FLA, P9A, P9B, P9P, P9R, P9S  
 Classification: HP  
 Suitable for: Lower deck B747, B777  
 Main deck: B707F, B727F, B737F  
 Maximum volume: 7.2 m<sup>3</sup> (254.2 Ft<sup>3</sup>)  
 Maximum gross weight: 3,175 Kg (7,000 Lb)



## M-6

IATA ULD Code: AGA 20Ft Box Container  
 Also known as: ASE  
 Classification: M-6  
 Suitable for: B747F, B747Combi  
 Internal volume: 33 m<sup>3</sup> (1,165.3 Ft<sup>3</sup>)  
 Maximum gross weight: 11,340 Kg (25,000 Lb)



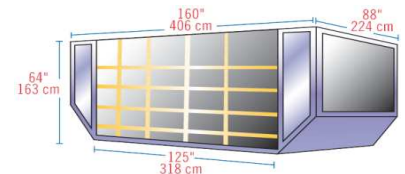
## 16 FT PALLET

IATA ULD Code: PRA 16Ft flat pallet with net  
 Also known as: PMA, P4A, P4M, PZA  
 Classification: MDP  
 Suitable for: B747, B747Combi  
 Maximum volume: 26.8 m<sup>3</sup> (946.4 Ft<sup>3</sup>)  
 Maximum gross weight: 11,300 Kg (24,912 Lb)



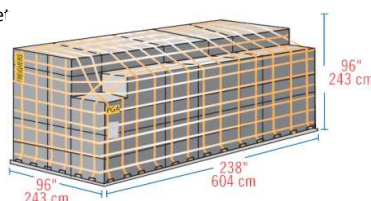
## LD-26

IATA ULD Code: AAF  
 Classification: LD-26  
 Suitable for: B747, B777, DC-10  
 Maximum gross weight:  
 747/DC-10: 6,033 Kg (13,300 Lb)  
 777/DC-10: 4,626 Kg (10,199 Lb)



## 20 FT PALLET

IATA ULD Code: PGA 20Ft flat pallet with net  
 Also known as: PGA, PGE, PGF, PSA, PSG, P7A, P7E, P7F, P7G  
 Classification: M-6  
 Suitable for: B747F, B747Combi  
 Maximum volume: 33.2 m<sup>3</sup> (1,172.4 Ft<sup>3</sup>)  
 Maximum gross weight: 11,340 Kg (25,000 Lb)



## LD-29

IATA ULD Code: AAU Contoured Container on P1P Base  
 Classification: LD-29  
 Suitable for: B747  
 Internal volume: 14.2 m<sup>3</sup> (501.4 Ft<sup>3</sup>)  
 Maximum gross weight: 6,033 Kg (13,300 Lb)

