

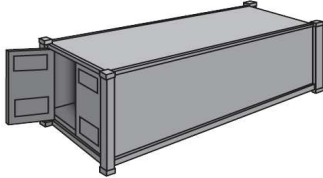
# OCEAN CONTAINER SPECIFICATIONS

The following dimensions and weights are offered as average indicators. Exact dimensions may vary due to manufacturer of equipment. Maximum capacity weights listed do not correspond to the permissible weight limit for port, road and rail transport in all locations. Loaded containers rarely weigh more than 50,000 Lb.

## DRY CONTAINERS

Suitable for normal cargos. Fitted with bar system for Garment on Hanger (GOH) cargos in some inventories/trade lanes.

### 20' STANDARD



INTERIOR DIMENSIONS		
LENGTH	WIDTH	HEIGHT
19' 4"	7' 8"	7' 10"
5.89 m	2.34 m	2.39 m

DOOR OPENINGS	
WIDTH	HEIGHT
7' 8"	7' 6"
2.34 m	2.29 m

MAXIMUM CAPACITY	
VOLUME	WEIGHT
1,172 Ft <sup>3</sup>	47,900 Lb
33.2 m <sup>3</sup>	21,727 Kg

TARE WEIGHT
4,916 Lb
2,230 Kg

### 40' STANDARD

INTERIOR DIMENSIONS		
LENGTH	WIDTH	HEIGHT
39' 5"	7' 8"	7' 10"
12.01 m	2.34 m	2.39 m

DOOR OPENINGS	
WIDTH	HEIGHT
7' 8"	7' 6"
2.34 m	2.29 m

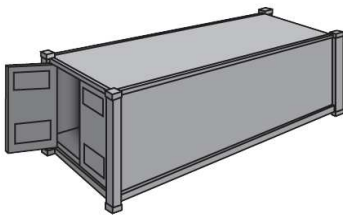
MAXIMUM CAPACITY	
VOLUME	WEIGHT
2,390 Ft <sup>3</sup>	59,040 Lb
67.7 m <sup>3</sup>	26,780 Kg

TARE WEIGHT
8,160 Lb
3,701 Kg

## HIGH CUBE DRY CONTAINERS

Specifically for light, voluminous, or over-height cargo.

### 40' HIGH CUBE



INTERIOR DIMENSIONS		
LENGTH	WIDTH	HEIGHT
39' 5"	7' 8"	8' 10"
12.01 m	2.34 m	2.70 m

DOOR OPENINGS	
WIDTH	HEIGHT
7' 8"	8' 5"
2.34 m	2.57 m

MAXIMUM CAPACITY	
VOLUME	WEIGHT
2,694 Ft <sup>3</sup>	58,450 Lb
76.3 m <sup>3</sup>	26,512 Kg

TARE WEIGHT
8,750 Lb
3,969 Kg

### 45' HIGH CUBE

INTERIOR DIMENSIONS		
LENGTH	WIDTH	HEIGHT
44' 6"	7' 8"	8' 10"
13.56 m	2.34 m	2.70 m

DOOR OPENINGS	
WIDTH	HEIGHT
7' 8"	8' 5"
2.34 m	2.57 m

MAXIMUM CAPACITY	
VOLUME	WEIGHT
3,050 Ft <sup>3</sup>	64,250 Lb
86.4 m <sup>3</sup>	29,143 Kg

TARE WEIGHT
8,550 Lb
3,878 Kg

## REEFER CONTAINERS

Specifically for cargo requiring transport at a constant temperature above or below a freezing point.

### 20' REEFER

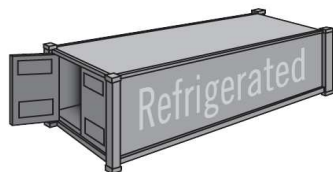
INTERIOR DIMENSIONS		
LENGTH	WIDTH	HEIGHT
17' 8"	7' 5"	7' 5"
5.38 m	2.26 m	2.26 m

DOOR OPENINGS	
WIDTH	HEIGHT
7' 5"	7' 3"
2.26 m	2.21 m

MAXIMUM CAPACITY	
VOLUME	WEIGHT
1,000 Ft <sup>3</sup>	45,760 Lb
28.3 m <sup>3</sup>	20,756 Kg

TARE WEIGHT
7,040 Lb
3,193 Kg

### 40' REEFER



INTERIOR DIMENSIONS		
LENGTH	WIDTH	HEIGHT
37' 8"	7' 5"	7' 2"
11.48 m	2.26 m	2.18 m

DOOR OPENINGS	
WIDTH	HEIGHT
7' 5"	7' 0"
2.26 m	2.13 m

MAXIMUM CAPACITY	
VOLUME	WEIGHT
2,040 Ft <sup>3</sup>	56,276 Lb
57.8 m <sup>3</sup>	25,526 Kg

TARE WEIGHT
10,780 Lb
4,890 Kg

### 40' REEFER HIGH CUBE

INTERIOR DIMENSIONS		
LENGTH	WIDTH	HEIGHT
37' 11"	7' 6"	8' 2"
11.56 m	2.29 m	2.49 m

DOOR OPENINGS	
WIDTH	HEIGHT
7' 6"	8' 0"
2.29 m	2.44 m

MAXIMUM CAPACITY	
VOLUME	WEIGHT
2,344 Ft <sup>3</sup>	57,561 Lb
66.4 m <sup>3</sup>	26,109 Kg

TARE WEIGHT
9,900 Lb
4,491 Kg

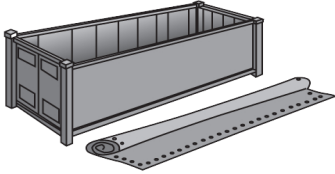
# OCEAN CONTAINER SPECIFICATIONS

The Following dimensions and weights are offered as average indicators. Exact dimensions may vary due to manufacturer of equipment. Maximum capacity weights listed do not correspond to the permissible weight limit for port, road and rail transport in all locations. Loaded containers rarely weigh more than 50,000 Lb.

## OPEN TOP CONTAINERS

Has a removable tarpaulin. Specifically for over-height cargo. Allow for a loading by crane.

### 20' OPEN TOP



INTERIOR DIMENSIONS		
LENGTH	WIDTH	HEIGHT
19' 4"	7' 7"	7' 8"
5.89 m	2.31 m	2.34 m

DOOR OPENINGS	
WIDTH	HEIGHT
7' 6"	7' 2"
2.29 m	2.18 m

MAXIMUN CAPACITY	
VOLUME	WEIGHT
1,136 Ft <sup>3</sup>	47,620 Lb
32.17 m <sup>3</sup>	21,600 Kg

TARE WEIGHT
5,280 Lb
2,395 Kg

### 40' OPEN TOP

INTERIOR DIMENSIONS		
LENGTH	WIDTH	HEIGHT
39' 5"	7' 8"	7' 8"
12.01 m	2.34 m	2.34 m

DOOR OPENINGS	
WIDTH	HEIGHT
7' 8"	7' 5"
2.34 m	2.26 m

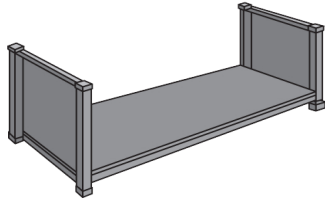
MAXIMUN CAPACITY	
VOLUME	WEIGHT
2,350 Ft <sup>3</sup>	58,710 Lb
67.5 m <sup>3</sup>	26,630 Kg

TARE WEIGHT
8,490 Lb
3,851 Kg

## FLAT RACK AND PLATFORM CONTAINERS

Specifically for heavy loads and over-width cargo. Ideal for out of gauge cargo that will not fit inside a closed container.

### 20' FLAT RACK



INTERIOR DIMENSIONS		
LENGTH	WIDTH	HEIGHT
18' 5"	7' 3"	7' 4"
5.61 m	2.21 m	2.24 m

DOOR OPENINGS	
WIDTH	HEIGHT
-	-
-	-

MAXIMUN CAPACITY	
VOLUME	WEIGHT
-	47,333 Lb
-	21,470 Kg

TARE WEIGHT
5,578 Lb
2,530 Kg

### 40' FLAT RACK

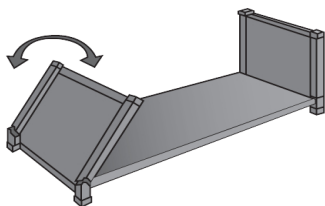
INTERIOR DIMENSIONS		
LENGTH	WIDTH	HEIGHT
39' 7"	6' 10"	6' 5"
12.07 m	2.08 m	1.96 m

DOOR OPENINGS	
WIDTH	HEIGHT
-	-
-	-

MAXIMUN CAPACITY	
VOLUME	WEIGHT
-	85,800 Lb
-	38,918 Kg

TARE WEIGHT
12,081 Lb
5,480 Kg

### 20' COLLAPSIBLE FLAT RACK



INTERIOR DIMENSIONS		
LENGTH	WIDTH	HEIGHT
18' 6"	7' 3"	7' 4"
5.64 m	2.21 m	2.24 m

DOOR OPENINGS	
WIDTH	HEIGHT
-	-
-	-

MAXIMUN CAPACITY	
VOLUME	WEIGHT
-	61,117 Lb
-	27,722 Kg

TARE WEIGHT
6,061 Lb
2,749 Kg

### 40' COLLAPSIBLE FLAT RACK

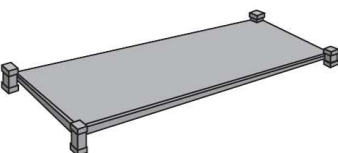
INTERIOR DIMENSIONS		
LENGTH	WIDTH	HEIGHT
39' 7"	6' 10"	6' 5"
12.07 m	2.08 m	1.96 m

DOOR OPENINGS	
WIDTH	HEIGHT
-	-
-	-

MAXIMUN CAPACITY	
VOLUME	WEIGHT
-	85,800 Lb
-	38,918 Kg

TARE WEIGHT
12,787 Lb
5,800 Kg

### 20' PLATFORM



INTERIOR DIMENSIONS		
LENGTH	WIDTH	HEIGHT
19' 11"	8' 0"	7' 4"
6.07 m	2.44 m	2.24 m

DOOR OPENINGS	
WIDTH	HEIGHT
-	-
-	-

MAXIMUN CAPACITY	
VOLUME	WEIGHT
-	52,896 Lb
-	24,993 Kg

TARE WEIGHT
6,061 Lb
2,749 Kg

### 40' PLATFORM

INTERIOR DIMENSIONS		
LENGTH	WIDTH	HEIGHT
40' 0"	8' 0"	6' 5"
12.19 m	2.44 m	1.96 m

DOOR OPENINGS	
WIDTH	HEIGHT
-	-
-	-

MAXIMUN CAPACITY	
VOLUME	WEIGHT
-	86,397 Lb
-	39,189 Kg

TARE WEIGHT
12,783 Lb
5,798 Kg